



St Albans Heights Primary School

Principal Mrs Effie Sultana

9366 4211

www.sahps.vic.edu.au

NEWSLETTER NO. 16

October 24th 2023



Principal's Message



Dear Parents/Guardians,

School Uniform

A reminder that only the official school uniform can be worn at school. Black is not part of our uniform, please ensure that your child is dressed appropriately to return to school. Wearing of school uniform encourages pride and inclusiveness, so it is very important all students abide by this policy. Your support is again appreciated, if you need support please contact Christine (student wellbeing officer/counsellor) or the school office.

Hats required in term 4

A reminder that as an accredited Sunsmart school, all students are required to wear a broad brimmed or legionnaires hat when outside. These can be purchased from the school office.

World Teacher's Day

World Teachers Day is celebrated worldwide on 5th October but here in Victoria it is acknowledged on Friday 27th October. We are extremely grateful to our teachers who do a fabulous job each and every day. Parents now more than ever appreciate the hard work involved in educating our future generations. Our staff always have the best interests of all students at the heart of everything they do and it is a pleasure to work with such a wonderful, dedicated group of people. I'm sure staff would appreciate a simple thank you message from families.



PAYMENT /CONSENT

DUE DATES

Afterschool Cricket
25th October

Whole School Movie
Excursion
5th December

IMPORTANT DATES

Monday 6th November
Curriculum Day
Tuesday 7th November
Melbourne Cup Day
NO SCHOOL

Tuesday 12th December
Year 6 Orientation Day

Thursday 14th December
Year 6 Graduation

Friday 15th December
End of Year Concert 9am - 11am

Tuesday 19th December
Whole School Movie Day
Class Parties
Last Day 3.15pm Dismissal

Wednesday 20th December
Curriculum day
No School



Principal's Message Continued



Staff Opinion Survey

Each year the Department of Education surveys teachers in all schools to determine a number of measures. Once again, this year we have had strong Staff Opinion data across the board, with our results showing SAHPS culture is performing above similar, network and state results. I'm so proud of the staff and school climate they have worked collectively to develop over the last few years.

School Staff Survey ⓘ

Endorsement in 2023 (%) ⓘ

School Climate for all respondents

86%
Your school

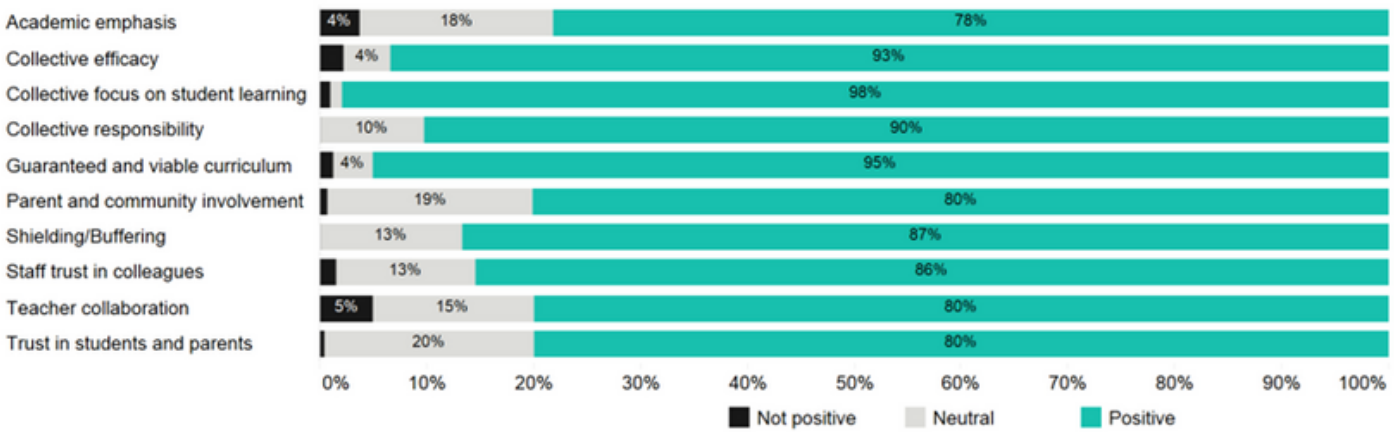
75%
Similar schools

79%
Network

78%
State

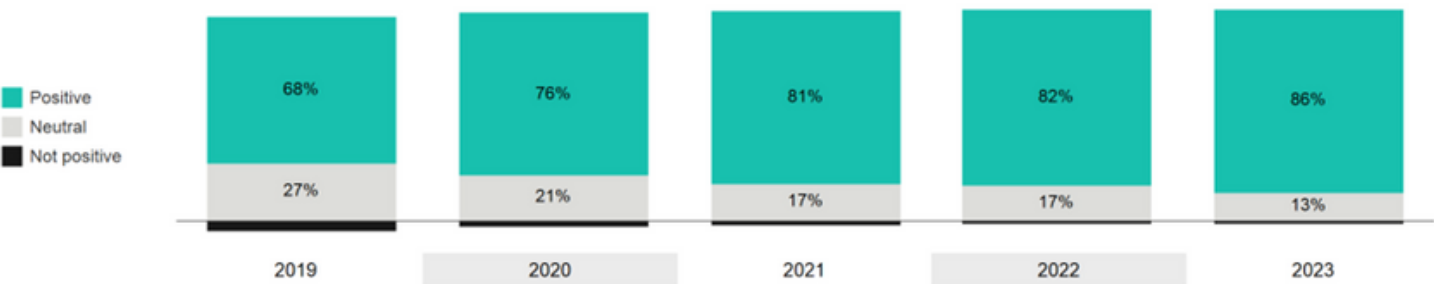
Responses by category in 2023 (%) ⓘ

School Climate for all respondents



Responses by category over last 5 years (%) ⓘ

School Climate for all respondents

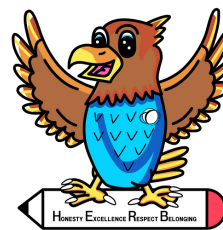


Planning for 2024

We are starting to plan for 2024 and we need accurate student numbers to plan the grade structure and teaching staff required for next year. If your family will be leaving our school for whatever reason can you please notify the office immediately so we can plan accordingly. We hate to say goodbye to any of our families but we understand that at times this is inevitable. Let us know if you are definitely moving schools for 2024, or even if there is a possibility you may be moving too. This does not apply to our current Year 6's who have been allocated a secondary college placement.



Principal's Message Continued



Forming classes in 2024

Once we have confirmed who will be attending SAHPS in 2024 the staff will begin forming classes. This is a complex process that takes a great deal of time, as staff consider all individual needs carefully. All classes need to be balanced according to gender, behaviours, academic abilities and social/friendship factors. Once they are formed it is very difficult to make any changes. I invite parents to send me an email if they have any concerns regarding their child's placement for 2024 related to the above factors. Please note that staffing has not been finalised and won't be completed until after the classes are formed, so this is not an opportunity for parents to request particular teachers. Please send any important considerations to me by 12.00pm Friday 3rd November at effie.sultana@education.vic.gov.au or to the front office.

Foundation Readiness Program

Our Foundation readiness program is starting shortly for our students currently enrolled for 2024. Ms Bubeck has sent home letters of the dates and the students will be involved in an extensive transition program to prepare them for starting school. Each Thursday morning in November (9th, 16th, 23rd & 30th) from 9.00-10.00am students will be participating in various classroom programs. Parents will be listening to presentations from a number of staff across the school. We welcome you all to SAHPS and look forward to seeing you all soon.

Canteen

A reminder that lunches are available Wed-Fri each week via the secondary college canteen. Orders must be placed by 8.15am each morning via the QKR app. Download this app to your phone to order and lunch is delivered to your child's classroom at 11.00am.

Community OSH - Before and After School Care Program

A reminder that staff are on duty from 8.30am each morning and until 3.30pm in the afternoon. They then need to attend meetings and get organised for the following day. If you cannot drop off and pick up your child within these times, then you may need to enrol them in the OSHC program or find a safe alternative.

Important dates for your diaries

For those who like to plan ahead, a reminder to keep checking COMPASS to remain up to date with everything that is happen.

Monday 6th November - Curriculum Day - students do not attend school.

Tuesday 7th November - CUP Day - Public holiday

Tuesday 12th December - Year 6 Orientation day - visit secondary school

Thursday 14th December - Year 6 Graduation

Friday 15th December -End of year concert whole school 9-11am

Tuesday 19th December - Movie Day, class parties and last day of term 3.15pm finish

Wednesday 20th December - Curriculum Day - students do not attend school.

Regards
Effie Sultana
Principal



The Check-In

FOUNDATION - GRADE 2 NEWS

FOUNDATION/1 BY MS DANIELLA, MS IRMA & MS KARA

This week in Maths, we started learning about a new unit, measurement. In F/1 the types of measurement we are focusing on are length or height, mass and capacity and we will be using informal units to measure in different ways.

Mass is how heavy something is. We used balance scales to find the mass of different things. When one bucket went down, it showed us that, that item was heavier. When one bucket went up, it showed us that, that item was lighter than the other. Before using the balance scales, we made a prediction by hefting items to feel which was heavier.



Hefting - The apple feels heavier than the pear.



The hand sanitiser is heavier than the ball.



The stapler and the remote have the same Mass.



The Check-In

FOUNDATION - GRADE 2 NEWS

FOUNDATION/1 BY MS DANIELLA, MS IRMA & MS KARA

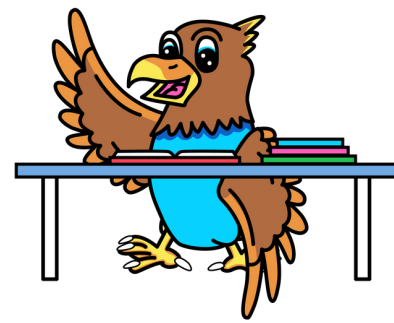
Capacity is how much a container can hold. In F/1 we used cups to measure the capacity. We had loads of fun with these activities and were able to record which container held the most water, least water and some of us were able to find containers that held the same amount.



The Check-In

GRADE 3-6 NEWS

BY MR JIMI, MS HELEN, & MS ABBY



Swimming!

In the first two weeks of the school term, the enthusiastic grade 3 and 4 students have been enjoying their time swimming at Sunshine Swimming Pool. With an eagerness to learn, they have been embracing new techniques and strategies, making each splash count as they build their confidence in the water. Under the guidance of dedicated instructors, the students have been mastering essential swimming skills and thoroughly enjoying this refreshing experience. Well done, Grade 3 and 4 students, for showcasing our school values!



The Check-In

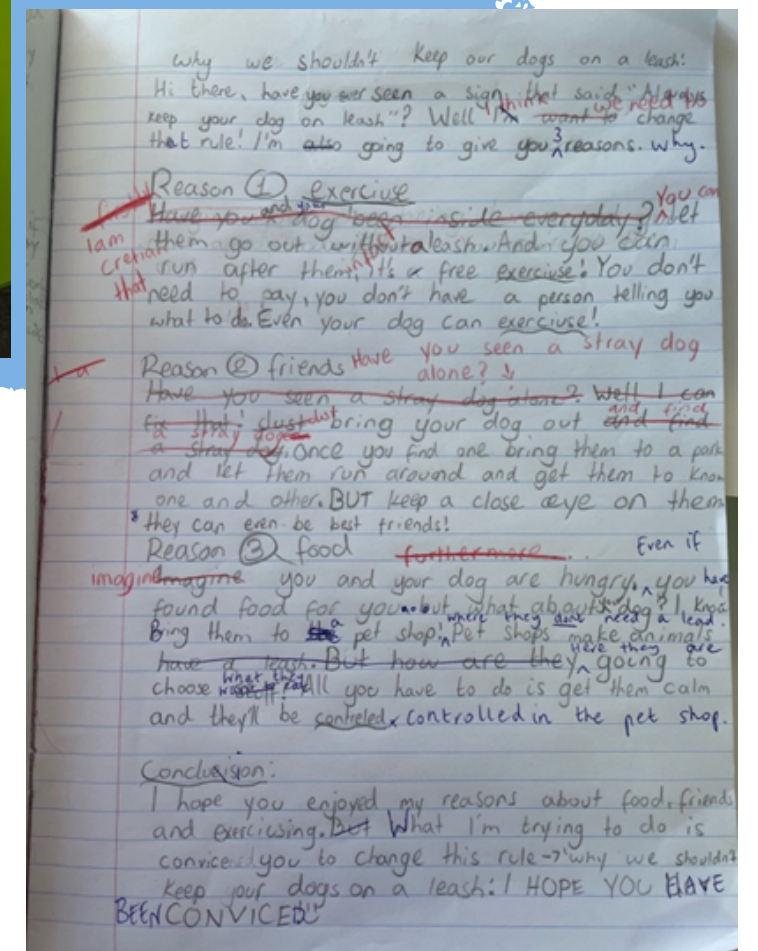
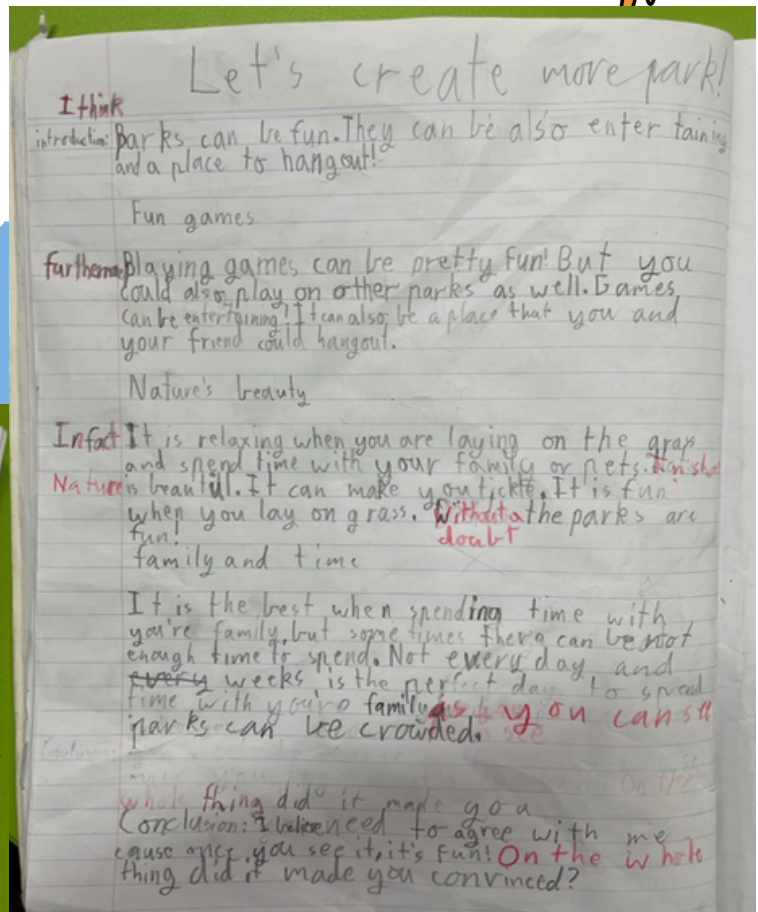
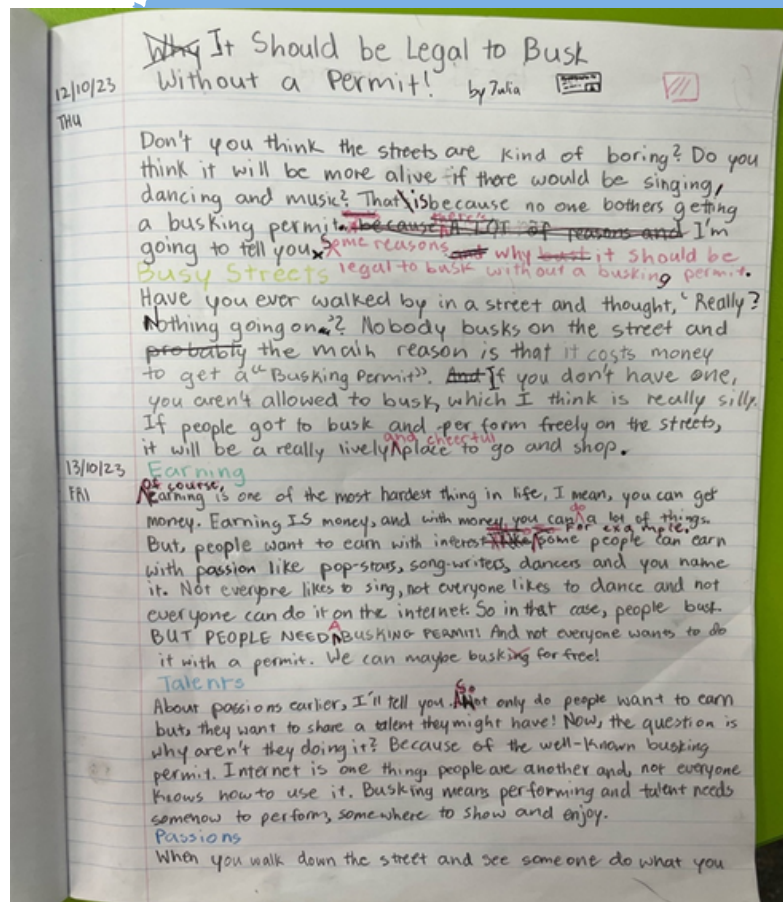
GRADE 3-6 NEWS

BY MR JIMI, MS HELEN, & MS ABBY



Writing

Enthusiastic and determined, the students have been passionately advocating for a change in a local or school rule through their persuasive writing. Utilizing persuasive sentence starters and strong vocabulary, they have skillfully expressed their desire for positive alterations that would benefit the school or community.



Reminders

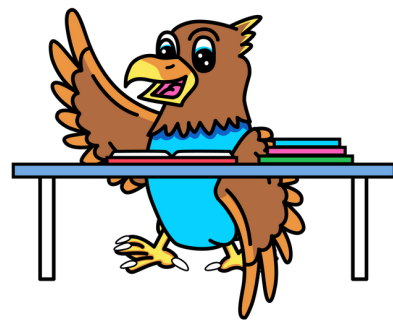
We remind students to read every night for 15 to 20 minutes and write a quick summary in their diaries. Their teachers will check their diaries each morning.

Homework

Every Monday students receive homework that is focusing on what we are learning in class for the week. We ask students to complete their homework and hand it in every Friday.

The Check-In

GRADE 3-6 NEWS
BY MR GARY, MS LAURA & MR DYLAN



5/6 students have settled back well into Term 4. In writing students have been working on their fantasy narratives and look forward to sharing them with you soon. In reading students are reading and analysing the class text, 'The Wonderful Wizard of Oz'. In Maths students have just finished their Chance and Probability project and have begun working through the 'Patterns and Algebra' unit. Students have been busy practising their class dance. Grade 6 students have started to prepare for their Grade 6 Graduation and are super excited to celebrate with family on 14th of December, more details to come. At the end of Week 4 we farewell our student teachers, Miss Melinda, Miss Papas and Miss Steph that have been with the classes since Term 2. We wish them all the best with the remainder of their studies this year and wish them all the best for their future teaching careers.

The Check-In

LITERACY WELLBEING



LITERACY BY MRS. BUBECK

The Importance of Home Reading Hi SAHPS Families

As part of our homework program all students are required to read every night and record their reading in their diary.

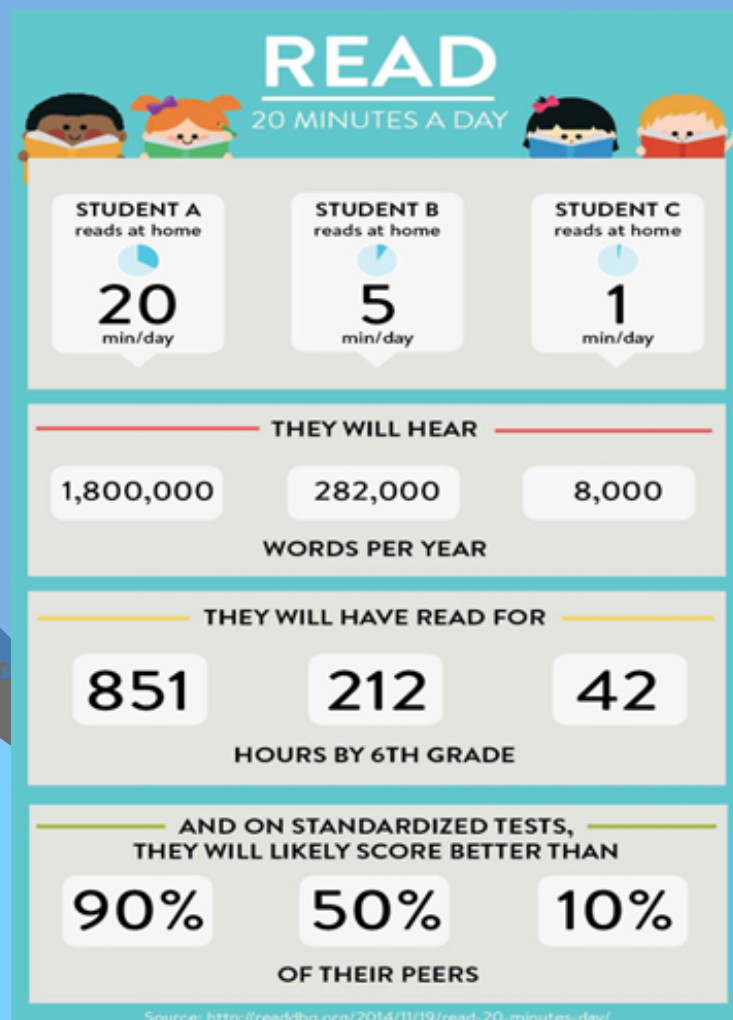
As you know we run a Home Reading Hero Competition every week. The grade with the highest percentage of student who have read every night receive a certificate and every student in that grade also receives an MVP card which they can use to purchase goodies from the MVP shop. Over the past few weeks there has been a decline across the school of students reading every night so I encourage all of you to ensure that your child is bringing home a book and reading every night.

I've included a snapshot of how time spent reading has a positive impact on student learning outcomes in all areas.

We encourage parents/guardians to record any feedback or comments about your child's reading that you would like to share with the classroom teacher.

If at any time you have any questions about your child's learning, please do not hesitate to contact their classroom teacher.

Happy reading
Mrs Bubeck
Assistant Principal



The Check-In



LITERACY WELLBEING WELLBEING BY MR. GLENN & MS. CHRISTINE

The nationally agreed definition of bullying which all Australian schools use:

Bullying is an ongoing and deliberate misuse of power in relationships through repeated verbal, physical and/or social behaviour that intends to cause physical, social and/or psychological harm. It can involve an individual or a group misusing their power, or perceived power, over one or more persons who feel unable to stop it from happening.

Bullying can happen in person or online, via various digital platforms and devices and it can be obvious (overt) or hidden (covert). Bullying behaviour is repeated, or has the potential to be repeated, over time (for example, through sharing of digital records).

Bullying of any form or for any reason can have immediate, medium and long-term effects on those involved, including bystanders. Single incidents and conflict or fights between equals, whether in person or online, are not defined as bullying.

The 3 main features of bullying are:

- the misuse of power in a relationship
 - it is ongoing and repeated
- it involves behaviours that can cause harm.



What is not bullying?

There are also some behaviours, which, although they might be unpleasant or distressing, are not bullying:

- mutual conflict that involves a disagreement, but not an imbalance of power. Unresolved mutual conflict can develop into bullying if one of the parties targets the other repeatedly in retaliation
- single-episode acts of nastiness or physical aggression, or aggression directed towards many different people, is not bullying
- social rejection or dislike is not bullying unless it involves deliberate and repeated attempts to cause distress, exclude or create dislike by others.

At SAHPS we take all allegations of bullying very seriously and put processes in place to ensure that disrespectful behaviours like bullying are stopped as soon as we are aware they are happening.

For more information, please go to

<https://www.education.vic.gov.au/about/programs/bullystoppers/Pages/what.aspx>

Or contact Mr Glenn

Kind Regards,

Glenn Groves

Positive Climate and Engagement Leader

Christine Thewma

Student Wellbeing Officer

St. Albans Heights Primary School is committed to the safety and wellbeing of all children and young people, we have a zero tolerance for child abuse. This will be the primary focus of our care and decision-making.



The Check-In

ART PE STEM JAPANESE

ART BY MR PODY

The students in Grade 3/4 have been learning about an artist named Frida Kahlo. They discovered that Frida painted many self-portraits of herself, she loved wearing jewellery and loved everything floral.

The students drew portraits of Frida Kahlo using a step by step lesson format, where they had to draw certain shapes and lines to achieve their goal of creating a portrait of this artist.





The Check-In

ART PE STEM JAPANESE

ART BY MR PODY





The Check-In

LIBRARY NEWS

BY MS CORAL

“LAMONT BOOK FAIR”
IS COMING YEAHHHHH!

Week 5

Monday 30th October
until
Friday 3rd November

8:30-9:00am and 3:15-4:00pm

You can come and look when it is open.
You will also get a chance to write a wish list during
your Library session.

Every purchase earns a raffle ticket for the chance to
win one of 2 prizes.

Every Sale earns \$\$ towards books for our Library.

PLEASE COME ALONG AND HAVE A LOOK.
Cards or Cash welcome.

Herb's Heroes



HONESTY
EXCELLENCE
RESPECT
BELONGING

| | | |
|----------|------|------------|
| Yara | F/1A | Excellence |
| Alisha | 1/2B | Honesty |
| Koul | 1/2A | Honesty |
| Henry | 3/4B | Belonging |
| Yara | F/1A | Excellence |
| Bao | 5/6C | Excellence |
| Zion | F1B | Excellence |
| Amir | 1/2B | Excellence |
| James | 3/4B | Excellence |
| Kingsley | 5/6A | Excellence |
| Dom | 5/6C | Excellence |
| Albert | 5/6A | Excellence |

| | | |
|----------|------|------------|
| Sinan | F/1B | Excellence |
| Angelina | 1/2A | Excellence |
| Taaz | 1/2C | Respect |
| William | 5/6A | Excellence |
| Sinan | F/1B | Excellence |
| Connor | F1A | Excellence |
| Kevinn | 1/2A | Respect |
| Tracey | 1/2C | Belonging |
| Annie | 3/4B | Respect |
| Pattee | 5/6B | Excellence |
| Victor | 1/2B | Excellence |
| Amy | 3/4A | Excellence |

The Check-In COMMUNITY HUB



BY MS. DANNIELLE

Community Hub Term 4 timetable.

| Monday | Tuesday | Wednesday | Thursday |
|--|--|---|--|
| <p>Cuppa & Chat.</p>  <p>9:30 am-11am In the Community Hub. Access the internet, have a cuppa & find out what's new at the Hub.</p> | <p>Make, Create, Grow & Sew.</p> <p>9:30-12:30pm (In the School community Hub)</p>  | <p>Zumba 9:30-10:30 @ Holy Eucharist Primary School (Morning tea provided)</p>  | <p>English Class 9:30-12:00pm (Child minding available)</p>  <p>St Albans Heights Primary School.</p> |
| <p>Vietnamese Playgroup 9:30-12:00pm</p>  <p>St Albans Heights Primary School.</p> | | | <p>Cooking and Conversation 1:00-3:00pm</p>  <p>(Childminding available.) St Albans Heights Primary School.</p> |
| <p>Mini Roo's Soccer Program. 3:15-4:30pm</p>  <p>St Albans Heights Primary School.</p> | | | |

If you're interested in joining any of our classes, please email your interest to dannielle.tomlinson@education.vic.gov.au or call **Dannielle on 9366-4211**.
Everyone is welcome & all events are **FREE** of charge unless stated otherwise.



If you're interested in joining any of our classes, please email your interest to dannielle.tomlinson@education.vic.gov.au or call Dannielle on 9366-4211.
All events are **FREE** of charge unless stated otherwise.

The Check-In COMMUNITY HUB



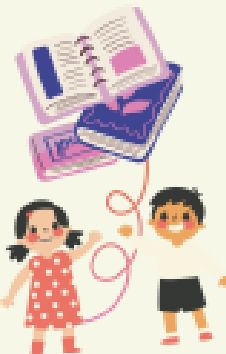
BY MS. DANNIELLE



Come and have a chat with
organisations in Brimbank to
find out more about their
services and programs for you
and your family!

This event is FREE!

There will be sausage sizzle, an
animal farm and fun activities
for children!



WHEN?
TUE, 24 OCT 2023
10AM - 2PM

WHERE?
THE SALVATION
ARMY HALL
42 DEVONSHIRE
ROAD, SUNSHINE
VIC 3020



Communities
for Children
Brimbank



**The Smith
Family**

Learn today, change tomorrow.

Brimbank Communities for Children is funded by the Australian
Government and facilitated by The Smith family.

If you're interested in joining any of our classes, please email your interest to
dannielle.tomlinson@education.vic.gov.au or call Dannielle on 9366-4211.

All events are FREE of charge unless stated otherwise.

The Check-In

OUTSIDE SCHOOL HOURS CARE NEWS



WEEK TWO & THREE, TERM 4 2023

COMMUNITYOSH NEWSLETTER ST ALBANS HEIGHTS PS



Hello Children and Families,

In week two, the children participated in our practice fire drill and our monthly kid's catch up meeting. Our kid's catch up meetings are suggestions and ideas for activities, menu, routine changes and resources from the children.

In week three, the children made a food poster and a food collage for World Food Day on 16th October. They used magazines and recycled boxes to cut and paste for the activity.

Thanks Bethany



TO ENROL & BOOK, LOGIN OR CREATE YOUR ACCOUNT AT
WWW.COMMUNITYOSH.EDU.AU OR EMAIL ADMIN@COMMOSH.EDU.AU

The Check-In

COMMUNITY NEWS



UNIFORM SALE

FINAL CLEARANCE

AVAILABLE WHILE

STOCKS LAST

WARM WINTER BEANIES

\$1 EACH



BE QUICK

The Check-In

COMMUNITY NEWS



GENESIS MUSIC SCHOOL

MUSIC LESSONS

Want to learn how to play
an instrument? Sign up now!

**CALL 0421 426 674
FOR ENQUIRIES**

**ENROL
GENESISMUSICSCHOOL.COM.AU**

Learn at your own pace and improve your skills
in playing various instruments under the
guidance of our expert musicians.

The Check-In

COMMUNITY NEWS



ST ALBANS HEIGHTS PRIMARY SCHOOL CANTEEN MENU 10TH JULY 2023

Hot Items

| | |
|---|-----------|
| Lasagne <i>E</i> | \$4.50 |
| Macaroni & Cheese <i>E V</i> | \$4.50 |
| Chicken Burger w Lettuce, Cheese & Mayo | \$5.50 |
| Beef Burger with Cheese, Tomato Sauce | \$5.50 |
| Oven Bake Chicken Nuggets (Breast) | 3/ \$3.50 |
| Dim Sims (Steamed) | \$1.50 |
| Fantastic Noodle (Chicken or Beef) | \$3.80 |
| Pie | \$4.50 |
| Party Pie/Sausage Roll | \$1.50 |
| Regular Sausage Roll | \$3.80 |
| Skinless Hot Dog | \$4.00 |
| Nacho-with Salsa & Cheese <i>E V</i> | \$3.80 |
| Falafel Bites GF Vegan <i>E</i> | 3/ \$3.00 |

Halal

| | |
|---|-----------|
| Halal Hot Dog | \$4.00 |
| Halal Pie | \$4.50 |
| Lasagne <i>E</i> | \$4.50 |
| Mac & Cheese <i>V E</i> | \$4.50 |
| Falafel Bites GF Vegan <i>E</i> | 3/ \$3.00 |
| Chicken Burger w Lettuce, Cheese & Mayo | \$5.50 |
| Vegetable Pastie <i>V</i> | \$4.50 |

Drinks

| | |
|--|--------|
| 600ml Water <i>E</i> | \$3.00 |
| 300ml Oak Milk (Chocolate, Strawberry) | \$3.20 |

Salad Bowls

| | |
|--|--------|
| Fruit Salad <i>E V</i> | \$1.50 |
| Garden Salad Bowl-Lettuce, Tomato, Cucumber, Beet, Carrot, Italian dressing <i>E V</i> | \$4.00 |

Sushi-Wednesday and Thursdays only

2 Rolls from 7.00

Chicken Teriyaki, California, Tuna & Avocado.

Canteen will be open Wednesday, Thursday, and Friday in 2023.

Please place orders by 8.30 am via the QKR App.

ORDERS CAN BE PLACED VIA THE QKR APP & THROUGH

THE CANTEEN



Download the Qkr app on your mobile or iPad today!

Sandwiches (Fresh or Toasted)

| | |
|--------------------------------------|--------|
| Salad <i>E V</i> | \$4.00 |
| Ham <i>E</i> | \$3.00 |
| Cheese <i>E</i> | \$3.00 |
| Ham & Cheese <i>E</i> | \$3.20 |
| HCT (Ham, Cheese & Tomato) <i>E</i> | \$3.70 |
| HLT (Ham, Lettuce & Tomato) <i>E</i> | \$3.70 |
| Chicken with Lettuce & Mayo <i>E</i> | \$4.70 |
| Tuna with Lettuce & Mayo <i>E</i> | \$4.70 |
| Vegemite & Cheese <i>E</i> | \$3.00 |
| Egg with Lettuce & Mayo <i>E</i> | \$4.20 |

Gluten Free Sandwiches Available add 30c

Rolls

| | |
|--------------------------------------|--------|
| Salad <i>E V</i> | \$4.50 |
| Ham <i>E</i> | \$3.50 |
| Ham & Cheese <i>E</i> | \$3.70 |
| HCT (Ham, Cheese & Tomato) <i>E</i> | \$4.20 |
| HLT (Ham, Lettuce & Tomato) <i>E</i> | \$4.20 |
| Chicken with Lettuce & Mayo <i>E</i> | \$5.20 |
| Tuna with Lettuce & Mayo <i>E</i> | \$5.20 |
| Vegemite & Cheese <i>E</i> | \$3.50 |
| Egg with Lettuce & Mayo <i>E</i> | \$4.70 |

Wraps

| | |
|--------------------------------------|--------|
| Salad <i>E V</i> | \$4.50 |
| Ham <i>E</i> | \$3.50 |
| Ham & Cheese <i>E</i> | \$3.70 |
| HCT (Ham, Cheese & Tomato) <i>E</i> | \$4.20 |
| HLT (Ham, Lettuce & Tomato) <i>E</i> | \$4.20 |
| Chicken with Lettuce & Mayo <i>E</i> | \$5.20 |
| Sweet Chilli Chicken Wrap | \$5.20 |
| Tuna with Lettuce & Mayo <i>E</i> | \$5.20 |
| Vegemite & Cheese <i>E</i> | \$3.50 |
| Egg with Lettuce & Mayo <i>E</i> | \$4.70 |

Snacks

| | |
|---|--------|
| Large Cookie | \$3.00 |
| Koala Popcorn (Sweet chilli, Sweet & Salty, Salty) <i>V</i> | \$2.00 |
| Jelly Cup <i>E</i> | \$1.50 |
| Noodle Snacks | \$1.20 |
| Fruit of the day | \$1.00 |

Additions for Sandwiches, Rolls and Wraps & Salad Plate

| | | |
|------------|----------------|------------|
| Ham 50c | Chicken \$1.00 | Egg \$1.00 |
| Cheese 50c | Tuna \$1.00 | |

E= Healthy Option *V* =Vegetarian Option GF =Gluten Free

Sandwiches, Rolls and Wraps are made with white bread. If you would like Wholemeal or Multigrain please state this on your order.

Tomato Sauce 20c
Brown Paper Bag 15c

Bảng tin số 16 ngày 24 tháng 10 năm 2023

Các Ngày Quan Trọng:

Thứ hai, 06 tháng 11: Ngày soạn thảo chương trình và

Thứ ba, 07 tháng 11 : Lễ Melbourne Cup , học sinh không đi học

Thứ ba, 12 tháng 12 : Lớp 6 hướng nghiệp

Thứ năm, 14 tháng 12: Lớp 6 Tốt nghiệp

Thứ sáu, 15 tháng 12: Ngày cuối năm học, Buổi văn nghệ từ 9gi đến 11gi sang

Thứ ba, 19 tháng 12: Toàn trường xem phim – Các lớp liên hoan

Ngày cuối năm bãi học 3gi 15

Thứ tư, 20 tháng 12: Ngày soạn thảo chương trình, trường đóng cửa. (no school)

LỜI NHẮN TỪ BÀ HIỆU TRƯỞNG

Kính thưa phụ huynh,

Đồng Phục -

Xin lưu ý: Học sinh cần phải mặc đồng phục khi đi học. Màu đen không phải là màu đồng phục. Các em cần phải ăn mặc chỉnh tề khi đến trường. Việc mặc đồng phục rất quan trọng vì nó sẽ làm cho con em tự hào và gắn bó với ngôi trường thân thương mình đang học. Vì thế các em phải tuân theo quy định này. Nhà trường rất cảm ơn sự hỗ trợ của phụ huynh trong vấn đề này. Nếu phụ huynh nào cần giúp đỡ trong việc mua đồng phục thì xin liên lạc với cô Christine (nhân viên trợ giúp học sinh) hay với văn phòng trường.

Cần phải đội nón trong học kỳ 4 -

Trường chúng ta được biểu dương là “trường chống nắng”. Tất cả học sinh cần phải đội nón rộng vành khi ra sinh hoạt ngoài trời. Phụ huynh có thể mua nón tại văn phòng trường.

Ngày Nhà Giáo Quốc Tế -

Ngày 5 tháng 10 là ngày Nhà Giáo Quốc Tế, Trên thế giới mọi người hân hoan chào đón ngày này. Nhưng tại Victoria ngày thứ sáu, 27 tháng 10 là ngày Nhà Giáo. Chúng ta rất tri ân các giáo viên đã hết lòng dạy dỗ chúng ta. Phụ huynh là người hơn ai hết rất quý trọng công việc nhọc nhằn này, công việc đào tạo con em cho tương lai. Giáo viên chăm sóc con em bằng trái tim của mình và cũng rất thích thú làm việc với các bạn bè chung quanh mình. Tôi biết chắc rằng các thầy cô giáo cũng biết ơn lời cảm ơn chân thành của phụ huynh.

Khảo Sát Ý Kiến -

Hàng năm sở Giáo dục tham khảo ý kiến giao viên trong tất cả các trường về một số phương diện. Lại một lần nữa trường chúng ta được công nhận là trường tốt trên trung bình. Tôi rất hạnh diện với ngôi trường này và với tập thể giao viên đã làm cho trường chúng ta tiến lên trong những năm vừa qua.

Vạch Kế Hoạch Năm 2024 -

Nhà trường đang tiến hành vạch kế hoạch cho năm 2024. Nhà trường cần biết chính xác số học sinh để phân chia lớp, bố trí giao viên cho năm sắp đến. Nếu gia đình nào vì một lý do gì sắp rời đi nơi khác thì xin thông báo cho trường biết ngay. Chúng tôi rất buồn khi nói lời tạm biệt nhưng chúng tôi thông cảm sự ra đi cần thiết của phụ huynh. Xin nói cho trường biết khi phụ huynh sắp rời đi hoặc có ý định rời đi nơi khác trong năm 2024. Điều này không liên quan đến các em lớp 6 chuyển lên trung học.

Phân chia Lớp năm 2024 -

Một khi trường năm chắc được sĩ số (Số học sinh), thì nhà trường sẽ phân chia lớp. Đây là một công việc rất phức tạp và cần rất nhiều thời gian, sự cẩn nhắc của giao viên về từng cá nhân học sinh. Tất cả các lớp cần quân bình về nam nữ, tánh tình, trình độ và liên hệ bạn bè. Một khi lớp đã cố định thì rất khó thay đổi. Tôi xin phụ huynh email cho tôi khi phụ huynh có quan ngại trong việc này. Xin nhớ rằng bố trí giao viên sau khi phân chia lớp ổn định và phụ huynh không thể chọn giao viên tùy thích. Xin vui lòng gửi cho tôi những điều quan ngại chính đáng trước 12 giờ ngày thứ sáu, 03 tháng 11 tại email : efie.sultana@education.vic.gov.au hay đến văn phòng.

Chương Trình Mẫu Giáo Sẵn Sàng Đi học -

Chương Trình Sẵn Sàng Đi học sẽ bắt đầu trong nay mai cho các em đã đăng kí năm 2024. Ms Bubeck đã gửi về gia đình thông báo ngày giờ cho các em được nằm trong chương trình này để các em chuẩn bị. Mỗi buổi sáng thứ năm trong tháng 11(ngày 9, 16, 23 và 30) từ 9giờ - 10giờ sáng các em đến dự nhiều chương trình khác nhau của lớp học. Cha mẹ sẽ lắng nghe các giao viên thuyết trình. Chúng tôi rất hoan hỷ đón mừng phụ huynh trong ngày hôm ấy.

Cần tin -

Xin lưu ý - Các em có thể đặt mua thức ăn trưa từ thứ tư đến thứ sáu thông qua trường trung học. Các em cần phải đặt mua lúc 8giờ 15 sang thông qua ký hiệu QKR app. Dao lo (Download) ký hiệu này trong điện thoại của phụ huynh, thức ăn sẽ đưa đến lớp học cho con em lúc 11giờ.

Cộng Đồng OSH - Việc Chăm Sóc Ngoài giờ Học -

Xin lưu ý giáo viên trực có mặt từ 8giờ 30 sáng đến 3giờ 30 chiều. Ngoài ra các giáo viên còn phải hội họp, soạn thảo chương trình cho ngày kế tiếp. Nếu phụ huynh không thể đưa đón con trong khoảng thời gian nói trên thì phụ huynh nên đăng ký với chương trình OSHC hay tìm một phương cách an toàn nào khác.