



Yard Duty and Supervision Policy 2022 - 2024

Honesty – Excellence – Respect – Belonging



Help for non-English speakers

If you need help to understand the information in this policy, please contact the school office.

PURPOSE

To ensure school staff understand their supervision and yard duty responsibilities.

SCOPE

This policy applies to all teaching and non-teaching staff at St Albans Heights Primary School, including education support staff, casual relief teachers and visiting teachers.

POLICY

Appropriate supervision is an important strategy to monitor student behaviour and enables staff to identify and respond to possible risks at school as they arise. It also plays a vital role in helping schools to discharge their duty of care to students.

The Principal is responsible for ensuring that there is a well organised and responsive system of supervision and yard duty in place during school hours, before and after school, and on school excursions and camps and other school activities.

School staff are responsible for following reasonable and lawful instructions from the Principal, including instructions to provide supervision to students at specific dates, times and places. Supervision should be undertaken in a way that identifies and mitigates risks to child safety.

Before and after school

St Albans Heights Primary's grounds are supervised by school staff from 8:30am until 3:30pm. Outside of these hours, school staff will not be available to supervise students.

Before and after school, school staff will supervise the main entrance and the basketball court, there will also be staff in the canteen supervising Breakfast Club from 8:30am until 8:50am.

Parents and carers will be advised through regular reminders in our newsletter that they should not allow their children to attend St Albans Heights Primary outside of these hours. Families will be encouraged to contact Out of School Hours Care for more information about the before and after school care facilities available to our school community.

If a student arrives at school before supervision commences at the beginning of the day, the Principal or nominee staff member will, as soon as practicable, follow up with the parent/carer to:

- advise of the supervision arrangements before school
- request that the parent/carer make alternate arrangements.

If a student is not collected before supervision finishes at the end of the day, the Principal or nominee staff member will consider whether it is appropriate to:

- attempt to contact the parents/carers
- attempt to contact the emergency contacts
- place the student in an out of school hours care program (if available and the parent consents)
- contact Victoria Police and/or Child Protection to arrange for the supervision, care and protection of the student.

Yard duty

All staff at St Albans Heights Primary are expected to assist with yard duty supervision and will be included in the Yard Duty Timetable.

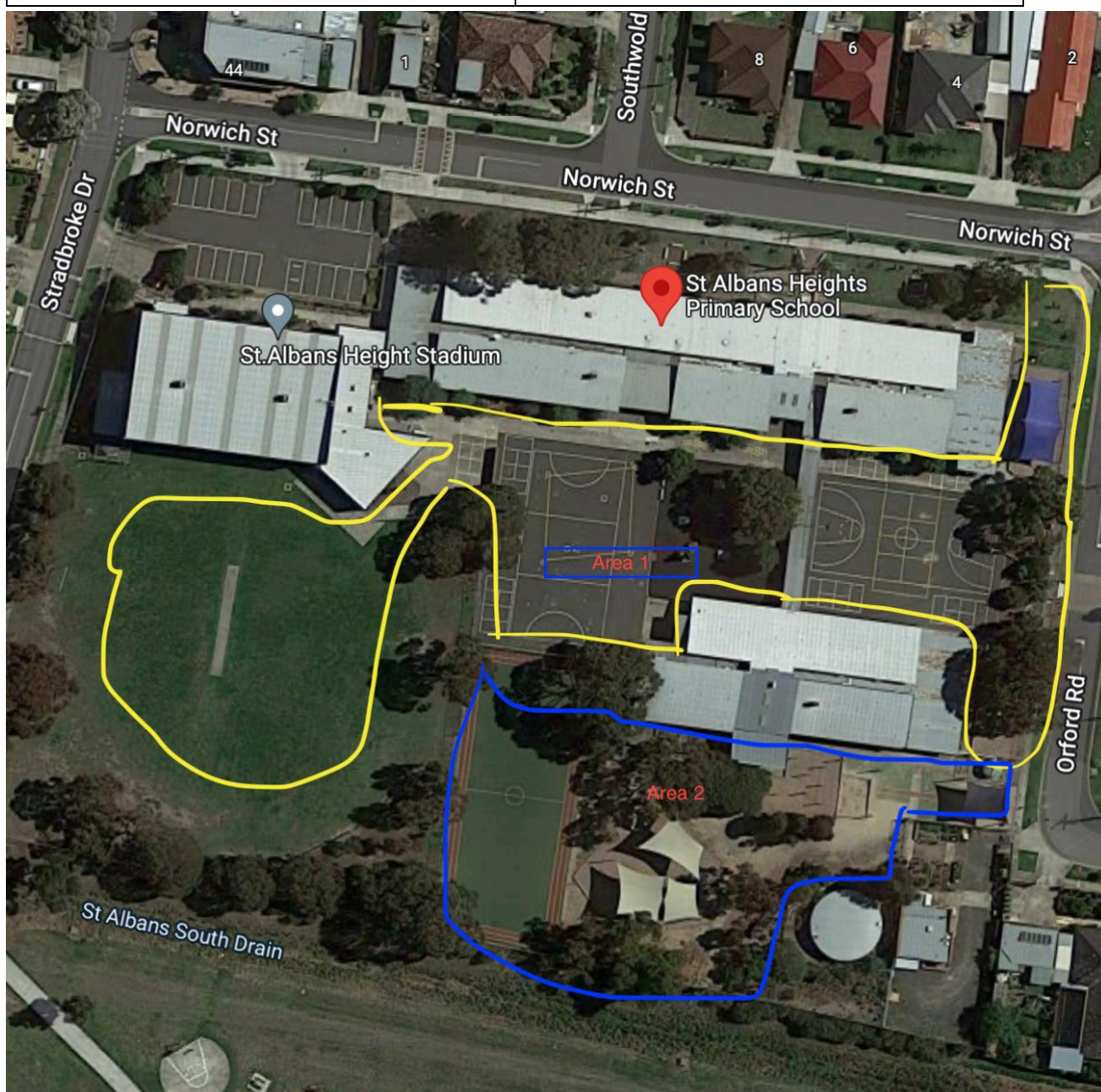
The Assistant Principal is responsible for preparing and communicating the yard duty roster on a regular basis. At St Albans Heights Primary, school staff will be designated a specific yard duty area to supervise.

Yard duty zones

The designated yard duty areas for our school (as at 12 August 2022) are

Area 1	Area 2
Foundation playground	Spiderweb
1/2 Playground	3-6 Playground
Basketball Court	Sandpit
Senior Toilet / Breezeway	Junior Toilets / Breezeway
Rock Area	Soccer Pitch
Netball Court	
Alcove	
Brick wall	
Oval	

Morning Front of school plus senior toilets	After School Front of school plus senior toilets
Morning Area 1 plus junior toilets, minus oval	After School Area 1 plus junior toilets, minus oval



Yard duty equipment

School staff must:

- wear a provided safety/hi-vis vest whilst on yard duty. Allocated to staff at beginning of each year.
- carry the yard duty first aid bag at all times during supervision.

- Be familiar with the yard duty information pack containing student health and safety information stored in the yard duty bag.

Yard duty responsibilities

Staff who are rostered for yard duty must remain in the designated area until they are replaced by a relieving staff member or the bell rings. Staff must stay in the allocated area until all students have left the area or are under the supervision of another staff member.

During yard duty, supervising school staff must:

- methodically move around the designated zone ensuring active supervision of all students, this movement should be random or unpredictable. This allows students in all areas of the yard to feel there is a reasonable chance you will move in their direction.
- moving and circulating, visually sweep all areas of the yard as well as looking at the students nearest you. If you are speaking with an individual student, position yourself so you can scan the entire yard simultaneously.
- frequent interactions can also include the use of pre-correction. Simply saying, "Please be sure to put all rubbish in the bin". "Remember to share the equipment," will increase expected behaviour.
- frequent interactions should also include both contingent and non-contingent attention. Non-contingent attention includes greetings, smiles, and conversations that provide time and attention that is not tied into performance. After interacting or assisting a student, taking the time to remind them of the expectation immediately increases the likelihood the student will use expected behaviours or adjust their work.
- where safe to do so, approach any unknown visitor who is observed on school grounds without a clear legitimate purpose, and ensure they have a visitor pass and have signed in (excluding drop off and collection periods)
- ensure students remain on their designated year level playgrounds
- be alert and vigilant
- intervene immediately if potentially dangerous or inappropriate behaviour is observed in the yard
- enforce behavioural standards and implement appropriate consequences for breaches of safety rules, in accordance with any relevant disciplinary measures set out in the school's Student Engagement policy
- ensure that students who require first aid assistance receive it as soon as practicable
- log any incidents or near misses as appropriate on Compass
- remain in the allocated area until all students have left the area at the end of break time

If being relieved of their yard duty shift by another staff member (for example, where the shift is 'split' into 2 consecutive time periods), the staff member must ensure that a brief but adequate verbal 'handover' is given to the relieving staff member in relation to any issues which may have arisen during the first shift.

If the supervising staff member is unable to conduct yard duty at the designated time, they should contact the Assistant Principal and Daily Organiser with as much notice as possible prior to the relevant yard duty shift to ensure that alternative arrangements are made.

If the supervising staff member needs to leave yard duty during the allocated time, they should contact a member of the leadership team but should not leave the designated area until the relieving staff member has arrived in the designated area.

If the relieving staff member does not arrive for yard duty, the staff member currently on duty should send a message to the office and not leave the designated area until a relieving staff member has arrived.

Students will be encouraged to speak to the supervising yard duty staff member if they require assistance during recess or lunchtime.

Classroom

The classroom teacher is responsible for the supervision of all students in their care during class.

If a teacher needs to leave the classroom unattended at any time during a lesson, they should first contact Daily Organiser for assistance. The teacher should then wait until a replacement staff member has arrived at the classroom before leaving.

School activities, camps and excursions

The Principal and leadership team are responsible for ensuring that students are appropriately supervised during all school activities, camps and excursions, including when external providers are engaged to conduct part or all of the activity. Appropriate supervision will be planned for school activities, camps and excursions on an individual basis, depending on the activities to be undertaken and the level of potential risk involved, and will follow the supervision requirements in the Department of Education and Training [Excursions Policy](#).

Digital devices and virtual classroom

St Albans Heights Primary School follows the Department's [Cybersafety and Responsible Use of Technologies Policy](#) with respect to supervision of students using digital devices.

Students requiring additional supervision support

Sometimes students will require additional supervision, such as students with disability or other additional needs. In these cases, the Principal or delegate will ensure arrangements are made to roster additional staff as required. This may include on yard duty, in the classroom or during school activities.

Supervision of student in emergency operating environments

In emergency circumstances our school will follow our Emergency Management Plan, including with respect to supervision.

In the event of any mandatory period of remote or flexible learning our School will follow the operations guidance issued by the Department.

COMMUNICATION

This policy will be communicated to our school community in the following ways

- Included in staff induction processes
- Discussed at staff briefings or meetings, as required

- Included in our staff handbook
- Included as a reference in our school newsletter
- Made available in hard copy from school administration upon request

Information for parents and students on supervision before and after school is available on our school website.

FURTHER INFORMATION AND RESOURCES

- the Department's Policy and Advisory Library (PAL):
 - [Child Safe Standards](#)
 - [Cybersafety and Responsible Use of Technologies](#)
 - [Duty of Care](#)
 - [Excursions](#)
 - [Supervision of Students](#)
 - [Visitors in Schools](#)

POLICY REVIEW AND APPROVAL

Policy last reviewed	August 2022
Approved by	Principal
Next scheduled review date	August 2024

This policy will also be updated if significant changes are made to school grounds that require a revision of St Albans Heights Primary's yard duty and supervision arrangements.